

STOP 8

EARNEST FORT-HOUSE

An early stone house built on the fort style of construction still stands proudly by the side of the road near the bridge. The rare 1784-1789 three story log blockhouse is still in use.



ELMWOOD FARM

Located near the town of Chuckey along the banks of the Nolichucky River, Elmwood Farm is the oldest Century Farm in Tennessee. Its history details how the activities of Tennessee's farm families have been intimately involved in the State's economic growth and development. Henry Earnest of Switzerland established the 600 acre farm in 1777.

STOP 9

TUSCULUM COLLEGE

Greeneville is also home to Tusculum College, founded in 1794 by the Presbyterian Church and the oldest college west of the Alleghenies. In 1980 eight buildings and the stone archway which marks the front entrance to the college was established as the Tusculum College Historic District by the National Trust for Historic Preservation. Today the College attracts students from all over the United States.



DOAK HOUSE

Located on the campus of Tusculum College is the restored home of Samuel Doak, first president of the college. It offers a good example of the building materials and techniques of the time.

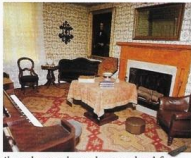
STOP 10

GREENEVILLE

Greeneville was established in 1781 and is one of the oldest cities in Tennessee. It served as the capital of the Sovereign State of Franklin from 1785-1788, hosted both Union and Confederate troops during the Civil War, saw a number of skirmishes, and most importantly, is the hometown of the 17th President of the United States, Andrew Johnson. Also of interest in Greeneville is the Old Harmony Cemetery which was established in 1791, the old 1882 Stone Jail, the Nathanael Greene Museum, the Greeneville Art Center, and for covered bridge enthusiasts - the old covered Bible's Bridge which is located just off the Warrensburg Road in the southwestern part of Greene County.

ANDREW JOHNSON NATIONAL HISTORIC SITE

History buffs may visit the two homes that Andrew Johnson lived in, as well as the tailor shop where he worked for thirty years. He is buried just a few blocks from his home, in the Andrew Johnson National Cemetery.



FORESTS

Diverse stands of mixed oak and hickory on farmland with pine stands on the ridges. Yellow poplar, white and red oaks on lower ground.

Hickory, white and red oaks on high ground. Yellow and white pines on ridge tops. Understory of white dogwood and pink redbud.

HUNTING

Bear, deer and small game, with bear and deer limited to the mountain fringes. Small game: squirrel, quail, fox, raccoon, grouse and turkey.

An unusually large selection of songbirds which change from winter to summer. Canadian birds winter here, while our summer birds winter in Florida.

About 150 different types of song birds in the course of a year.

BACKROAD HISTORY
in America's First Frontier

Chamber of Commerce • 115 Academy St.
Greeneville, Tn 37743 • 615-638-4111

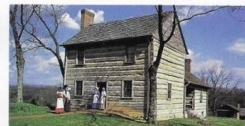
BACKROAD HISTORY
in America's First Frontier



STOP 1

ROCKY MOUNT

Experience the life-style of days past. Interpreters dressed in authentic costumes demonstrate the skills of an early pioneer family. The dangers which they faced, the everyday hardships, are recreated before your eyes. Rocky Mount is the oldest original territorial capitol in the United States. On the site is the Massengill museum of overmountain history, which presents changing exhibits of the early history of the region. Visit Rocky Mount today. It is open Monday - Saturday 10AM - 5PM and Sunday 2PM - 6PM. Closed weekends during January and February.



STOP 2

TIPTON-HAYNES HISTORICAL FARM

Experience the most historic site in Tennessee. It is the site of the "Battle of the Lost State of Franklin." Visit the museum, gift shop, Limestone Cave, and the nature trails which are also on the site. Tipton-Haynes Historical Farm is open Monday-Friday 10:00AM - 4:00PM Saturday-Sunday 2:00 - 5:00PM April through October.



STOP 3

JONESBOROUGH

Established in 1779, Jonesborough is Tennessee's oldest town and the oldest town west of the Appalachian Mountains. Once the capital of the Lost State of Franklin, Jonesborough is a living restored community that offers a rare glimpse into history, into a time when presidents were made and nations were born.



Begin your visit at the Historic Jonesborough



Visitor's Center, home of the Jonesborough-Washington County History Museum. A slide presentation and several types of tours of the Jonesborough Historic District are available at the Visitor's Center.

The Museum is open Monday-Friday 8AM - 5PM, Saturdays 10AM - 5PM, Sundays 1PM - 5PM April through December. Closed weekends in January and February.

CHESTER INN

Constructed in the late 1700's, the Chester Inn is the oldest structure in Jonesborough. It was at the Inn that frequent Jonesborough visitor, Andrew Jackson, was threatened with a tar and feathering.

CHRISTOPHER TAYLOR LOG HOUSE

Once falling into oblivion in a lonely field just outside of Jonesborough, the Christopher Taylor Log House was restored as the keystone of the town's restoration effort. Andrew Jackson, later 7th President of the United States, boarded here while living briefly in Jonesborough.

STOP 4

TELFORD

Survey work for the East Tennessee, Virginia and Georgia Railroad, which was to run between Knoxville and Wytheville, Virginia,



was completed in 1854. Construction began from both ends of the road and continued until the rails met at Mosheim in 1858.

Colonel Telford established the Telford Agricultural Manufacturing Company about 1876. The three story factory made Agricultural implements, and attached to the west end of the factory building was a foundry which made stoves and cast-iron pots. The three-story building, which still stands, was acquired by Mr. W. A. Maloney in 1894 for Eureka Rolling Mills. The Telford Store - 1916 - had the first gas pump between the towns of Greeneville and Jonesborough. In the course of a year, the store owner would often purchase 35 to 40,000 pounds of walnuts, most of which had been taken in trade by customers, and ship them to other markets. The store is still doing business today.



STOP 5

WASHINGTON COLLEGE ACADEMY

In its early history Washington College Academy - then Washington College - produced many successful alumni. The school has graduated 22 college presidents, 28 members of Congress, 3 governors, 63 physicians, 16 missionaries, 162 ministers, many judges, lawyers, editors, teachers, farmers, a chaplain and the only man to be Admiral of the Navy while at the same time being General of the Army.



Washington College Academy is now an independent, co-educational boarding and day school for grades 7 - 12.

SALEM PRESBYTERIAN CHURCH
Salem Presbyterian Church was founded in 1780 by Samuel Doak, a Presbyterian minister. Construction on the present building was begun in 1894 at a projected cost of \$10,400.00. Brick for the entire structure was "burnt" near the building site. The logs needed in the construction were brought in by a three-team wagon.

STOP 6

LIMESTONE

Limestone has been the scene of Cherokee Indians sporting war paint, as well as skirmishes between Northern and Southern forces during the Civil War. The town was first known as "Freedom" and in later years as "Kleppers Depot" in honor of Jacob Klepper, who donated land for a train depot on the East Tennessee, Virginia and Georgia Railroad line. The name Limestone came into use during the Civil War, possibly from the name of the creek which runs through the community and from the abundance of natural limestone rock found in the area.

STOP 7

DAVY CROCKETT BIRTHPLACE STATE PARK

Davy Crockett, the celebrated hero, warrior and backwoods statesman, was born on the banks of the Nolichucky River on August 17, 1786. In the middle 1800's, a limestone marker was placed at the site of the original log cabin, where today, stands an accurate historical reproduction of the house where Crockett was born. The Park, which is open seven days a week, sits on 63 acres of land and offers a visitors center and museum, a seventy-five site campground, a swimming pool, as well as picnic areas.



STOP 8

CHUCKEY

The present site of Chuckey was developed after the railroad was completed in 1858. The earlier settlement, Earnestville, was located on the Nolichucky River at the Earnest Bridge, where an early mill was operated.

